



**HBRS Femur Alt Uç Rezeksiyon Protezi**  
**HBRS Distal Femur Resection Prosthesis**



**Distal Femur Full  
Resection Component**  
Femur Alt Uç Full  
Rezeksiyon Parçası

Material: Co. Cr. Mo. Alloy

| Left<br>Sol | Right<br>Sağ | Size<br>Boy |
|-------------|--------------|-------------|
| 647.0103    | 647.0104     | Pediatric   |
| 647.0101    | 647.0102     | 1           |



**Yoke  
Mafsal**

Material: Co. Cr. Mo. Alloy

| Short<br>Kısa | Long<br>Uzun | Size<br>Boy |
|---------------|--------------|-------------|
| 647.0908      | 647.0909     | Pediatric   |
| 647.0901      | 647.0902     | 1           |
| 647.0903      | 647.0904     | 2           |



**Boss Core Bar  
Göbek Mili**

Material: Co. Cr. Mo. Alloy

| Code<br>Kod | Size<br>Boy |
|-------------|-------------|
| 647.0305    | 46 mm.      |
| 647.0301    | 58 mm.      |



**Bolt for Yoke  
Mafsal Vidası**

Material: Titanium Alloy

| Code<br>Kod |
|-------------|
| 647.0906    |



**Tube for Yoke  
Mafsal Tüpü**

Material: UHMWPE

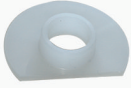
| Code<br>Kod | Size<br>Boy |
|-------------|-------------|
| 647.0911    | Pediatric   |
| 647.0905    | 1           |



Insert  
Tibia Yatağı

Material: UHMWPE

| 6 mm.    | 10 mm.   | Size<br>Boy |
|----------|----------|-------------|
| 647.0605 | 647.0606 | Pediatric   |
| 647.0601 | 647.0602 | 1           |
| 647.0603 | 647.0604 | 2           |
| 647.0609 | 647.0610 | 3           |
| 647.0611 | 647.0612 | 4           |



Bush  
Burç

Material: UHMWPE

| Code<br>Kod | Size<br>Boy |
|-------------|-------------|
| 647.0203    | Pediatric   |
| 647.0201    | 1           |



Tibial Block  
Tibia Yükseltici Blok

Material: Co. Cr. Mo. Alloy

| Code<br>Kod | Size<br>Boy |
|-------------|-------------|
| 647.1201    | Pediatric   |
| 647.1202    | 1           |
| 647.1203    | 2           |
| 647.1204    | 3           |
| 647.1205    | 4           |



Extension Piece  
Uzatma Borusu

Material: Co. Cr. Mo. Alloy

| Code<br>Kod | Length<br>Uzunluk |
|-------------|-------------------|
| 647.1151    | 40 mm.            |
| 647.1152    | 50 mm.            |
| 647.1153    | 60 mm.            |
| 647.1154    | 70 mm.            |
| 647.1155    | 80 mm.            |
| 647.1156    | 90 mm.            |
| 647.1157    | 100 mm.           |
| 647.1158    | 110 mm.           |
| 647.1159    | 120 mm.           |



**Proximal Tibia Minimal  
Resection Component**  
Tibia Üst Uç Kısmi  
Rezeksiyon Parçası

Material: Co. Cr. Mo. Alloy

| Code<br>Kod | Size<br>Boy |
|-------------|-------------|
| 647.0705    | Pediatric   |
| 647.0701    | 1           |
| 647.0702    | 2           |
| 647.0703    | 3           |
| 647.0704    | 4           |



**Proximal Tibia Minimal  
Resection Component**  
Tibia Üst Uç Kısmi  
Rezeksiyon Parçası

Material: Co. Cr. Mo. Alloy  
Tips Coated

| Code<br>Kod | Size<br>Boy |
|-------------|-------------|
| 647.0715    | Pediatric   |
| 647.0711    | 1           |
| 647.0712    | 2           |
| 647.0713    | 3           |
| 647.0714    | 4           |



**Fix Proximal Tibia Minimal  
Resection Component**  
Sabit Mafsallı Tibia Üst Uç  
Kısmi Rezeksiyon Parçası

Material: Co. Cr. Mo. Alloy

| Short Yoke<br>Kısa Mafsallı | Long Yoke<br>Long Mafsallı | Size<br>Boy |
|-----------------------------|----------------------------|-------------|
| 647.0741                    | 647.0745                   | 1           |
| 647.0742                    | 647.0746                   | 2           |
| 647.0743                    | 647.0747                   | 3           |
| 647.0744                    | 647.0748                   | 4           |



Modular Proximal Tibia Minimal  
Resection Component  
Uzatmalı Tibia Üst Uç Kısmı  
Rezeksiyon Parçası

Material: Co. Cr. Mo. Alloy

| Çimentolu<br>Cemented | Çimentosuz<br>Uncemented | Size<br>Boy |
|-----------------------|--------------------------|-------------|
| 647.0721              | 647.0731                 | 1           |
| 647.0722              | 647.0732                 | 2           |
| 647.0723              | 647.0733                 | 3           |
| 647.0724              | 647.0734                 | 4           |



Cemented Hexagonal  
Small Conical Stem  
Çimentolu Altıgen  
Küçük Konik Stem

Material: Co. Cr. Mo. Alloy

| Straigh<br>Düz | Ø       |
|----------------|---------|
| 647.1101       | Ø10 mm. |
| 647.1102       | Ø11 mm. |
| 647.1103       | Ø12 mm. |
| 647.1104       | Ø13 mm. |
| 647.1105       | Ø14 mm. |
| 647.1106       | Ø15 mm. |
| 647.1107       | Ø16 mm. |



TIPS Coated



TIPS + HA Coated

Uncemented Hexagonal  
Small Conical Stem  
Çimentosuz Altıgen  
Küçük Konik Stem

Material: Titanium Alloy

| Straigh<br>Düz | Curved<br>Eğri | Ø       |
|----------------|----------------|---------|
| 647.1110       | 647.1130       | Ø10 mm. |
| 647.1111       | 647.1131       | Ø11 mm. |
| 647.1112       | 647.1132       | Ø12 mm. |
| 647.1113       | 647.1133       | Ø13 mm. |
| 647.1114       | 647.1134       | Ø14 mm. |
| 647.1115       | 647.1135       | Ø15 mm. |
| 647.1116       | 647.1136       | Ø16 mm. |

| Straigh<br>Düz | Curved<br>Eğri | Ø       |
|----------------|----------------|---------|
| 647.1120       | 647.1140       | Ø10 mm. |
| 647.1121       | 647.1141       | Ø11 mm. |
| 647.1122       | 647.1142       | Ø12 mm. |
| 647.1123       | 647.1143       | Ø13 mm. |
| 647.1124       | 647.1144       | Ø14 mm. |
| 647.1125       | 647.1145       | Ø15 mm. |
| 647.1126       | 647.1146       | Ø16 mm. |



**Cemented Large Conical Stem**  
Çimentolu Büyük Konik Stem

Material: Co. Cr. Mo. Alloy

| Straight<br>Düz | Curved<br>Eğri | Ø       |
|-----------------|----------------|---------|
| 647.1010        | 647.1001       | Ø10 mm. |
| 647.1011        | 647.1002       | Ø11 mm. |
| 647.1012        | 647.1003       | Ø12 mm. |
| 647.1013        | 647.1004       | Ø13 mm. |
| 647.1014        | 647.1005       | Ø14 mm. |
| 647.1015        | 647.1006       | Ø15 mm. |
| 647.1016        | 647.1007       | Ø16 mm. |



Material: Titanium Alloy  
TIPS Coated

| Straight<br>Düz | Curved<br>Eğri | Ø       |
|-----------------|----------------|---------|
| 647.1030        | 647.1020       | Ø10 mm. |
| 647.1031        | 647.1021       | Ø11 mm. |
| 647.1032        | 647.1022       | Ø12 mm. |
| 647.1033        | 647.1023       | Ø13 mm. |
| 647.1034        | 647.1024       | Ø14 mm. |
| 647.1035        | 647.1025       | Ø15 mm. |
| 647.1036        | 647.1026       | Ø16 mm. |



**Uncemented Hexagonal  
Large Conical Stem**  
Çimentosuz Altıgen  
Büyük Konik Stem

Material: Titanium Alloy  
TIPS+HA Coated

| Straight<br>Düz | Curved<br>Eğri | Ø       |
|-----------------|----------------|---------|
| 647.1050        | 647.1040       | Ø10 mm. |
| 647.1051        | 647.1041       | Ø11 mm. |
| 647.1052        | 647.1042       | Ø12 mm. |
| 647.1053        | 647.1043       | Ø13 mm. |
| 647.1054        | 647.1044       | Ø14 mm. |
| 647.1055        | 647.1045       | Ø15 mm. |
| 647.1056        | 647.1046       | Ø16 mm. |



**Hipokrat Tıbbi Malzemeler İmalat ve Pazarlama A.Ş.**

**📍 7407/6 Sokak No:10 35060 Pınarbaşı Bornova - İZMİR / TÜRKİYE**

**☎ + (90) 232 479 11 09**

**✉ info@hipokrat.com.tr**

**☎ + (90) 232 479 44 29**

**🌐 www.hipokrat.com.tr**